

KINGRINDER MANUAL HAND COFFEE GRINDER MANUAL

MODEL: K6

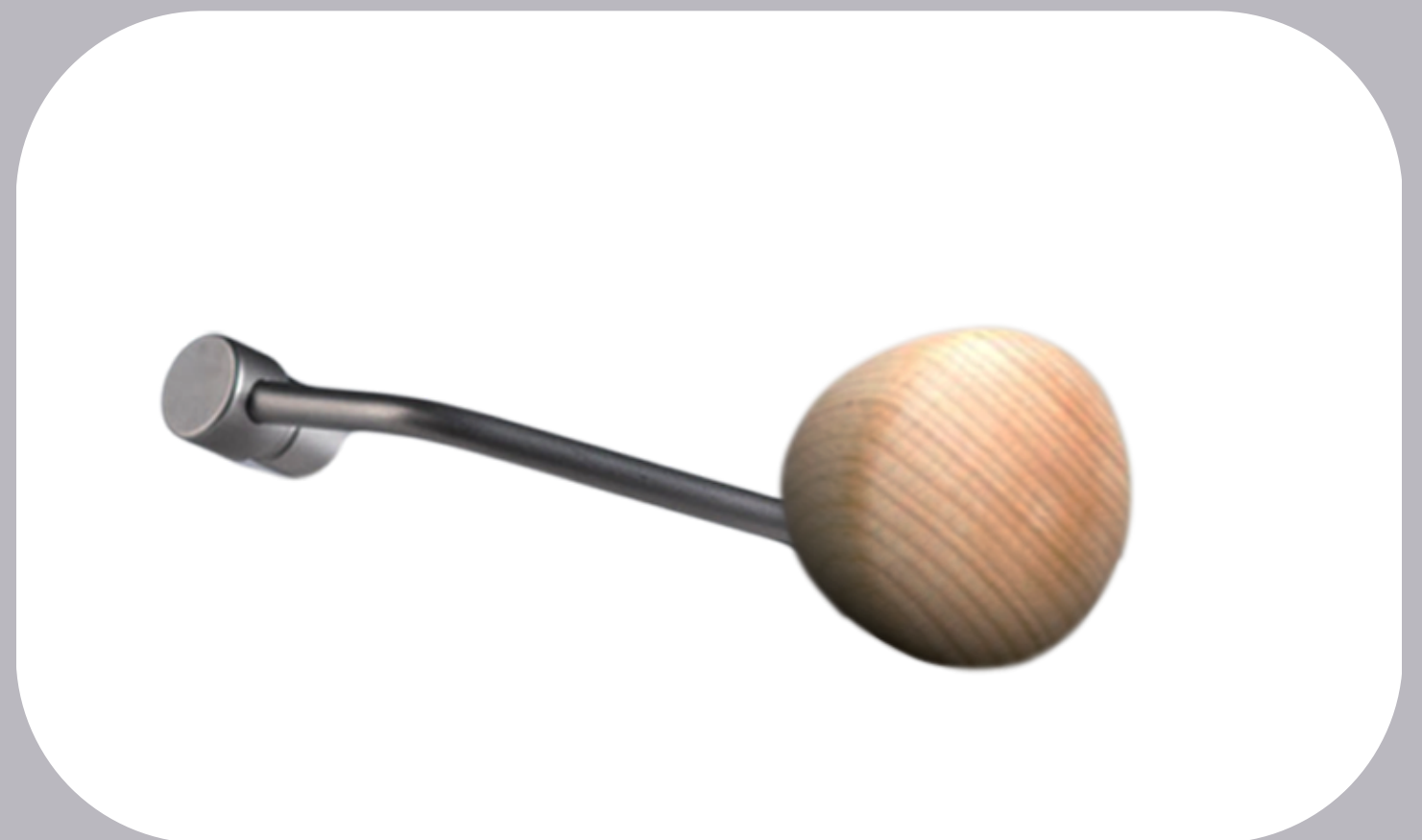


WHAT'S IN THE BOX

- Grinder



- Handle



- Plastic Lid with Black O-ring



- White O-ring & Circlip



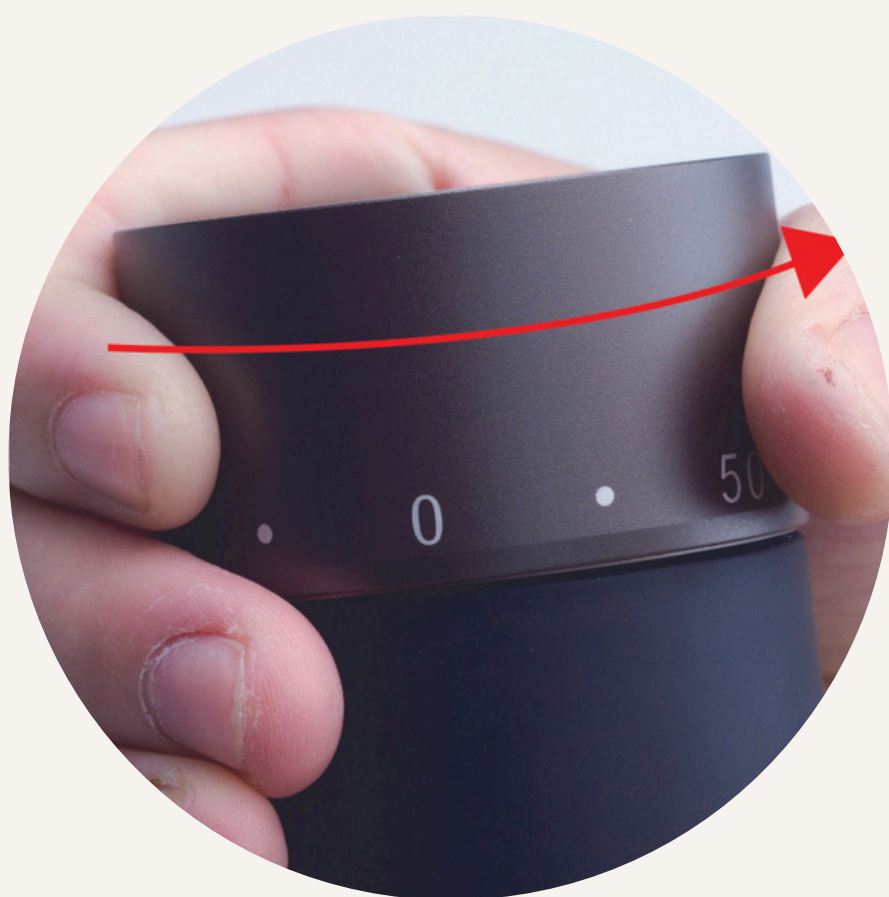
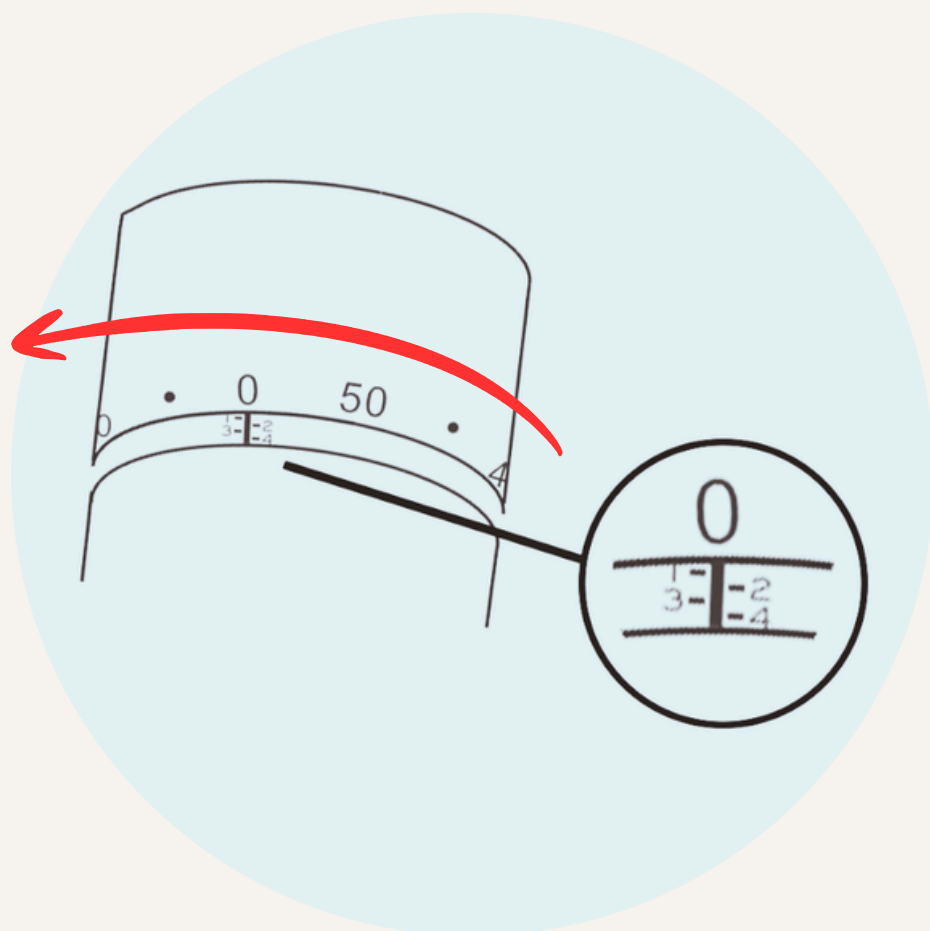
- Brush



There may be different versions; pictures are for reference only.

HOW TO OPERATE THE GRINDER?

- 1. Gently rotate the adjustment nut clockwise until it stops at number 0.
The number 0 is the correct zero position, **do not over tighten it to past number 0.**
- 2. Rotate the adjustment nut counterclockwise to the recommended grinding clicks (Please refer to the table below).
- 3. Place 30~35g of coffee beans on the grinder.
- 4. Place the handle on and start grinding.



RECOMMENDED GRINDER SETTINGS

Brewing methods	K6
Turkish coffee	20 clicks
Espresso	40 clicks
Moka pot AeroPress	60~70 clicks
Pour-Over	90~100 clicks
French Press	120~140 clicks

※One round is equivalent to 60 clicks.
※For reference only; adjustments may be made according to personal preference.

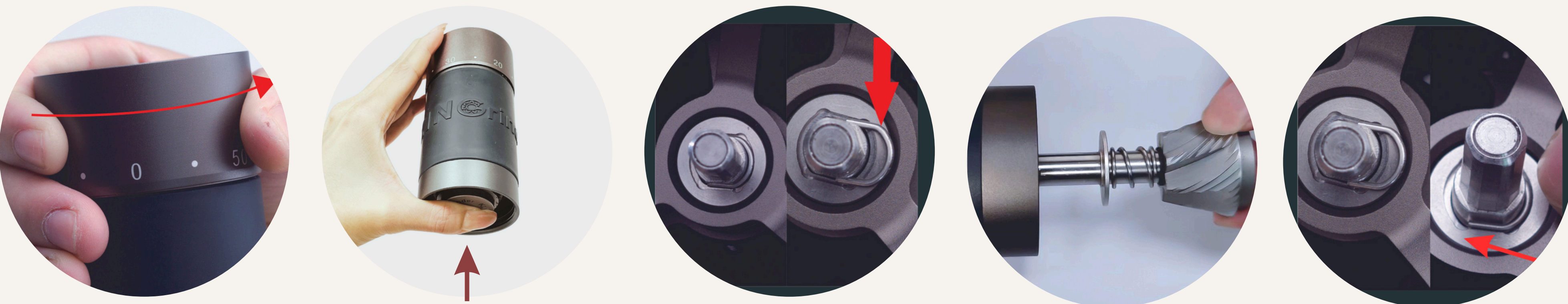
HOW TO CLEAN THE GRINDER?

Disassemble:

1. Rotate the adjustment nut anti-clockwise for three or four rotations.
2. Holding the burr set while removing the circlip.
3. Take out the components in order. The burr set (attached with the central shaft), the bearing cover, and the spring from the burr set. The top bearing cover and the top bearing from the above. **In this state, do not rotate the adjustment nut as it is an unnecessary step.**

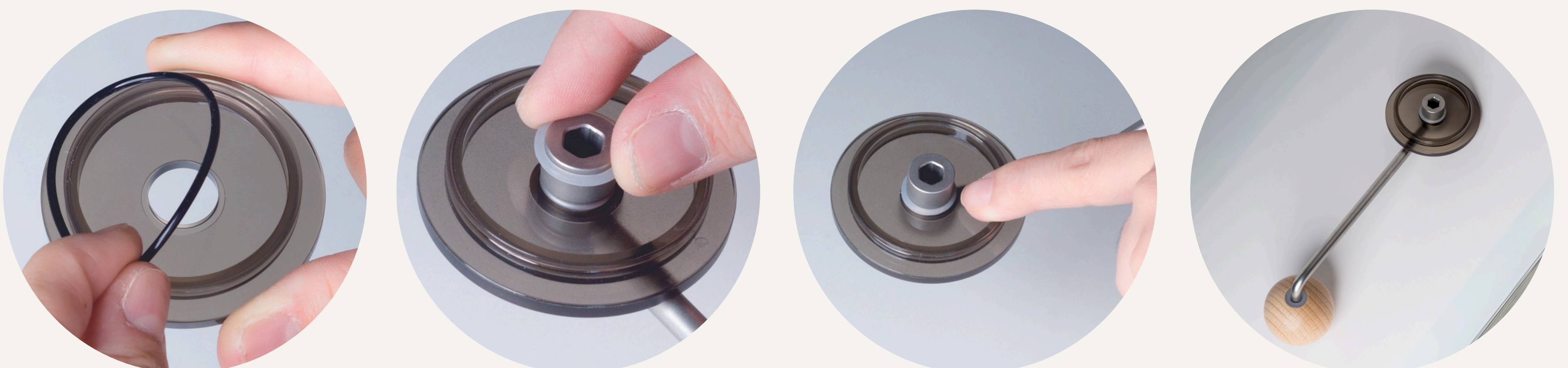
Assemble:

1. Put the components in order. Place the spring and the bearing cover into the burr set and install the burr set back to the grinder.
2. While holding the burr set, place the top bearing and the top bearing cover. Note that there are two shapes of the top bearing cover: flat design & curved design. Ensure that the curved design of the top bearing cover faces upward.
3. Slide the circlip onto the top bearing cover while still holding the burr set.



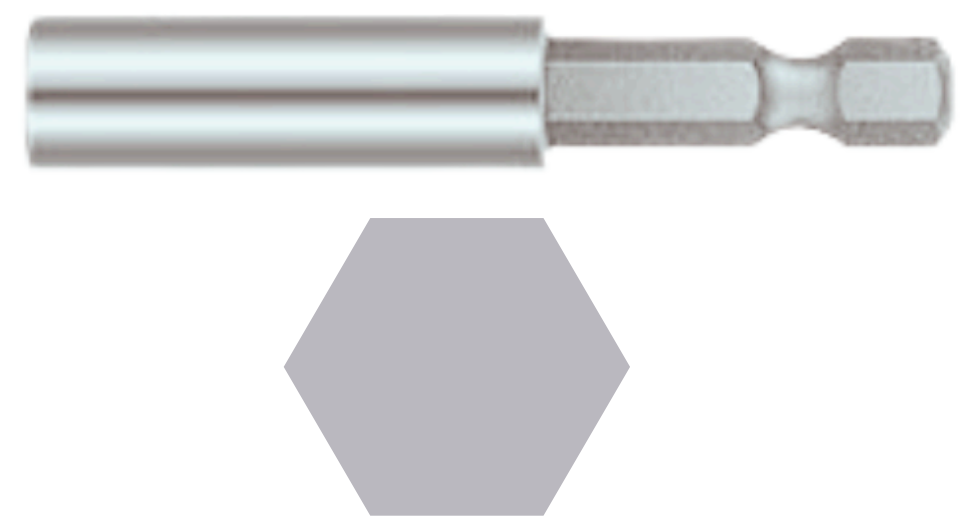
HOW TO ASSEMBLE THE PLASTIC LID AND HANDLE?

1. **Take out the black O-ring** from the groove on the plastic lid.
2. Insert the provided white O ring.
3. Ensure that **the white O-ring is correctly installed into the groove** on the handle for proper fixation.



HOW TO USE IT BY ELECTRIC?

You need to prepare:



Electric screwdriver at a **15~25Nm torque**. **6.35mm(1/4 inch)** Hex Shank.



Take out the handle and install the black O-ring to the plastic lid.



Ensure that the bit holder is fully inserted into the center shaft, grasp the grinder firmly, and gradually apply power.

Slow down the grinding speed to prevent damage to the central shaft.

PRECAUTIONS:

1. The entire grinder **should not be washed with water**. Please use the brush for cleaning.
2. Please **disassemble and clean thoroughly** on a regular basis, with intervals not exceeding **30 days**.
3. Do not rotate the handle when the grind setting is **at 0 or below 15 clicks**, as this could damage the burr set.
4. For precision reasons, do not dismantle the exterior burr. Avoid forcefully disassembling the grinder with tools.
5. Only grind coffee beans. Do not grind unroasted coffee beans.
6. Avoid spraying water directly onto any part of the grinder. You can perform RDT by spraying water on another object.
7. Avoid second grinding as the coffee fine powder may block the parts.
8. Please store in a dry environment.